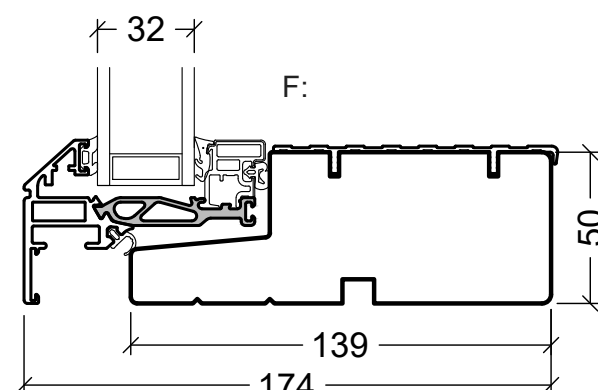
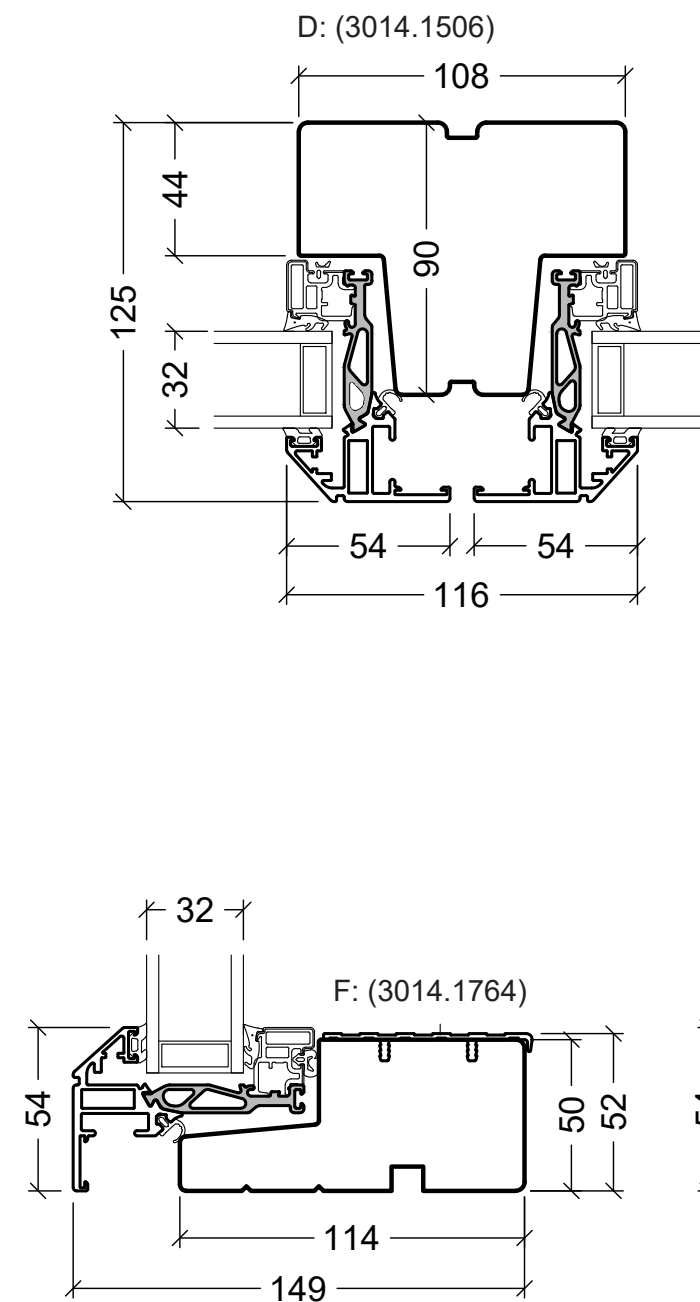
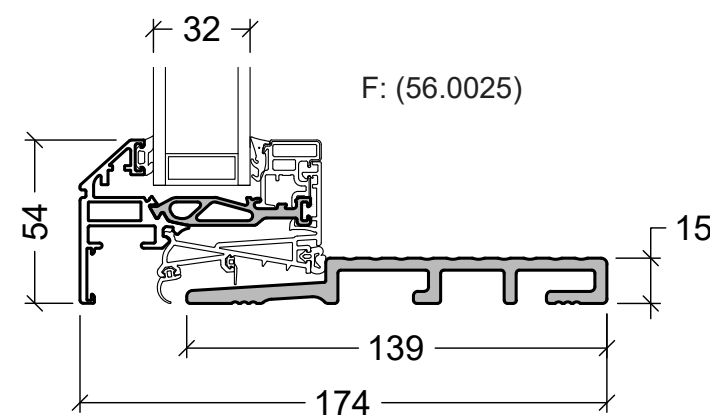
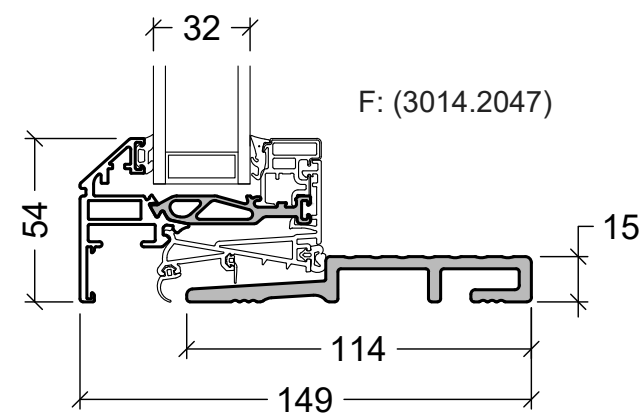
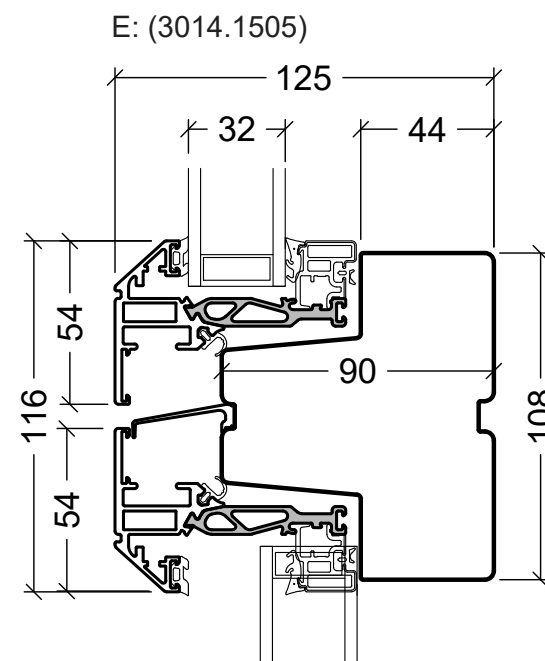


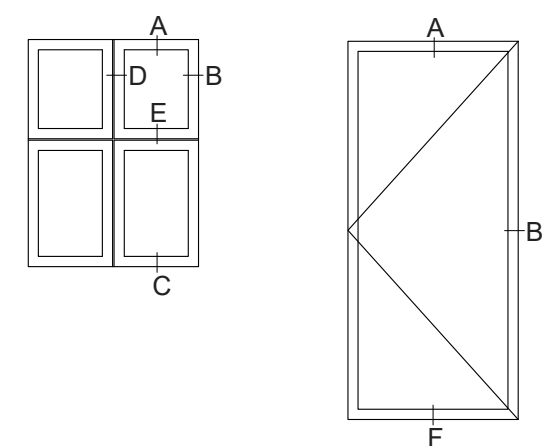
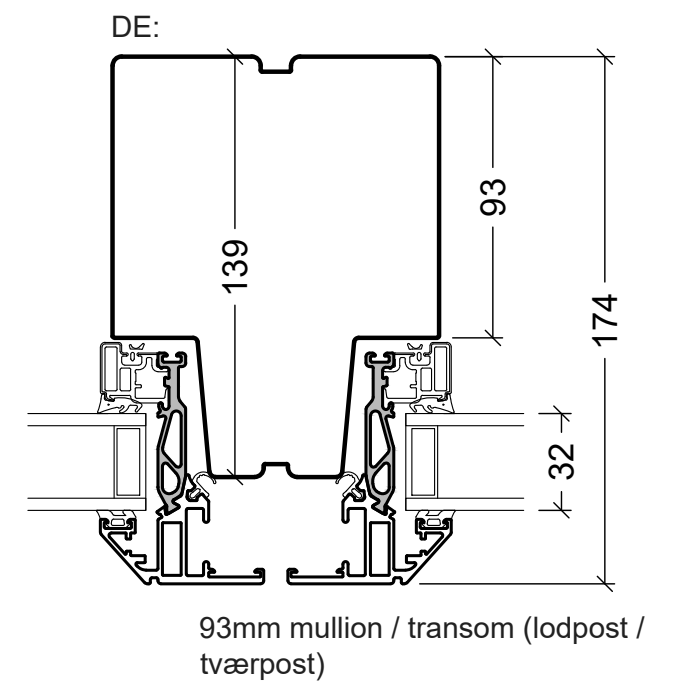
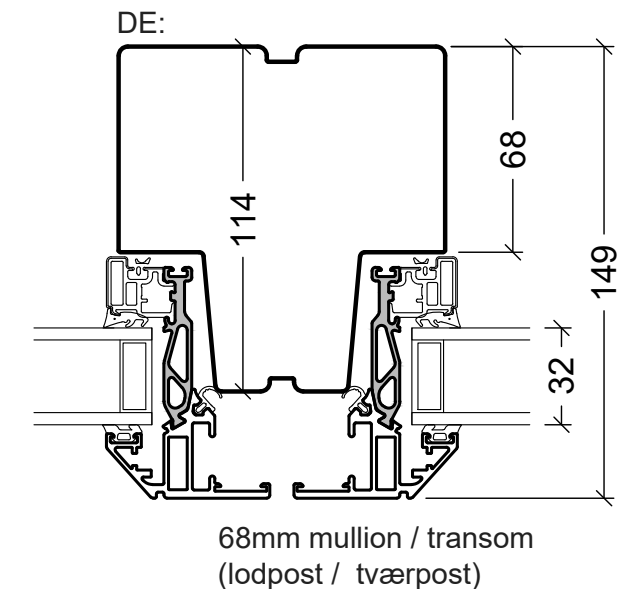
139mm frame (karm)



139mm frame (karm)



Low threshold for 139mm frame
(Lav bundstykke til 139mm karm)



VELFAC®

VELFAC is a trademark of DOVISTA A/S

© DOVISTA A/S, CVR-no. 21147583. All intellectual property rights, copyright as well as all rights in know-how vest in DOVISTA A/S. This drawing may not be reproduced, stored, or transmitted in any form by any means (electronic, mechanical, photocopying, recording or otherwise) without the prior written consent of DOVISTA A/S. This drawing is to be used only for the purposes specified by DOVISTA A/S and for no other purpose. We reserve all rights to change the product and product range without notice.

System: VELFAC Edge

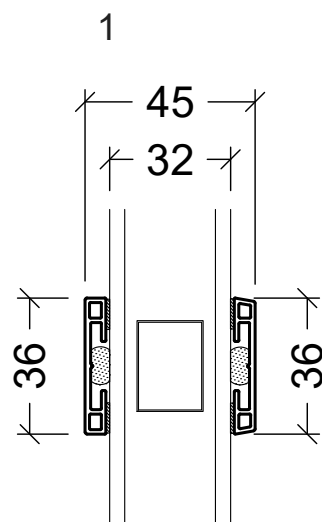
English: Standard details

Dansk: Standard snit

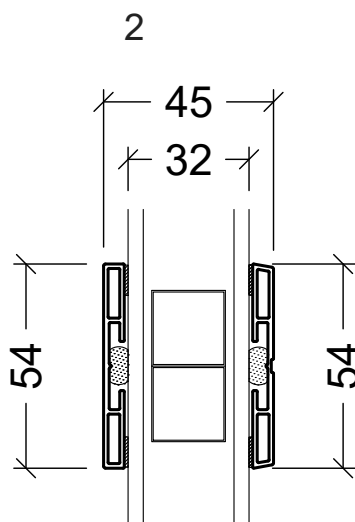
Scale: 1:2,5 / 1:40

Edition No. 04

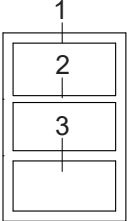
01.21 © 2015, 2021




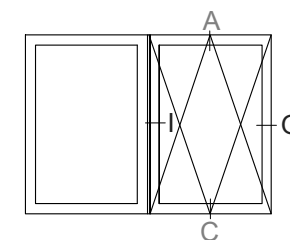
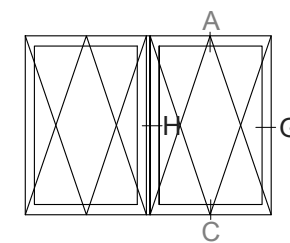
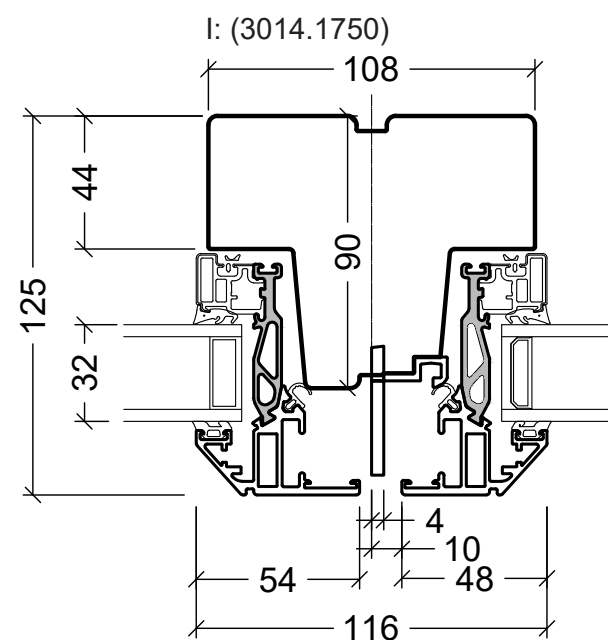
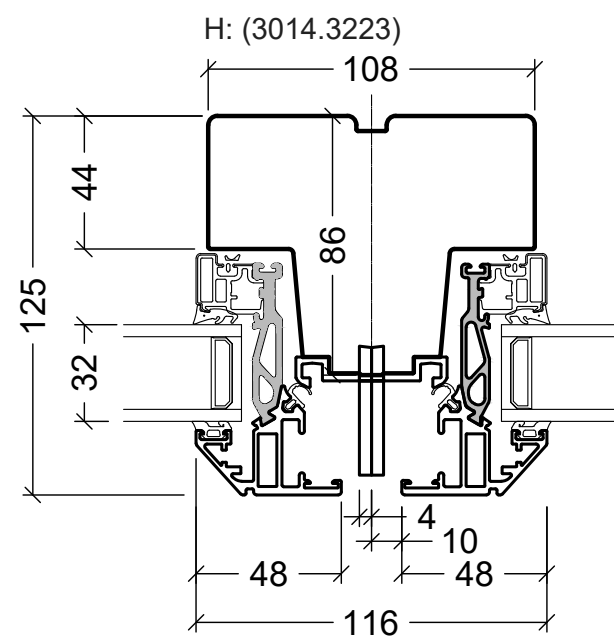
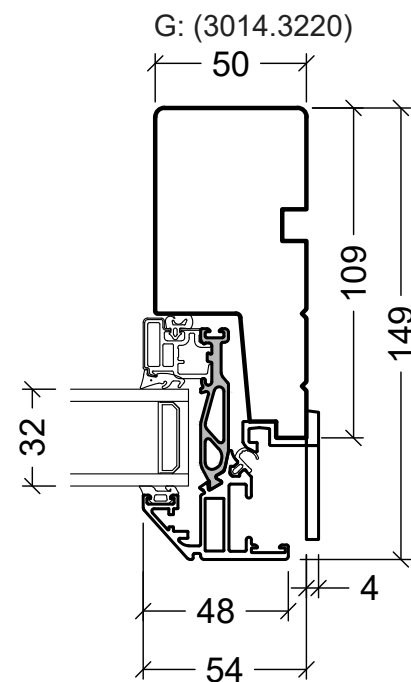
3014.3265
36mm VELFAC Edge glazingbar (sprosse)



3014.3100
54mm VELFAC Edge glazingbar (sprosse)



 VELFAC is a trademark of DOVISTA A/S	System: VELFAC Edge	Scale: 1:2,5 / 1:40
	English: Glazing bars	Edition No. 04
	Dansk: Sprosser	01.21 © 2015, 2021
© DOVISTA A/S, CVR-no. 21147583. All intellectual property rights, copyright as well as all rights in know-how vest in DOVISTA A/S. This drawing may not be reproduced, stored, or transmitted in any form by any means (electronic, mechanical, photocopying, recording or otherwise) without the prior written consent of DOVISTA A/S. This drawing is to be used only for the purposes specified by DOVISTA A/S and for no other purpose. We reserve all rights to change the product and product range without notice.		



(A) (C) = as standard V200 ENERGY, see "Details"

VELFAC®

VELFAC is a trademark of DOVISTA A/S

System: VELFAC Edge

English: Reversible window

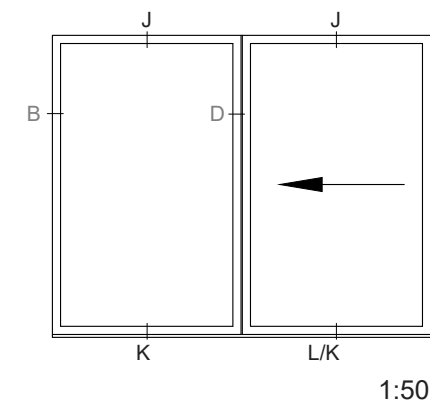
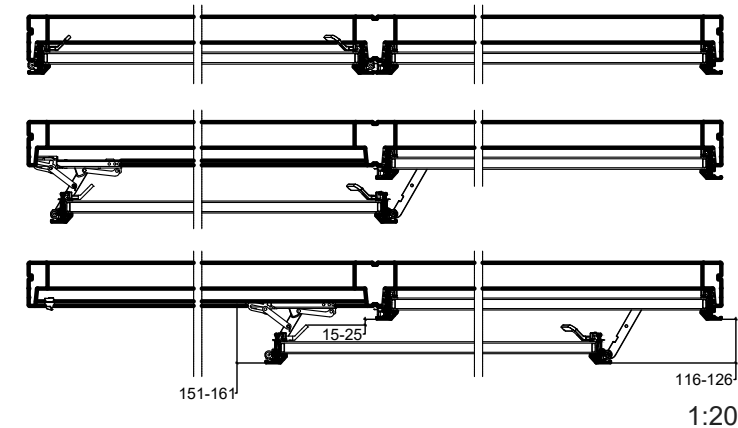
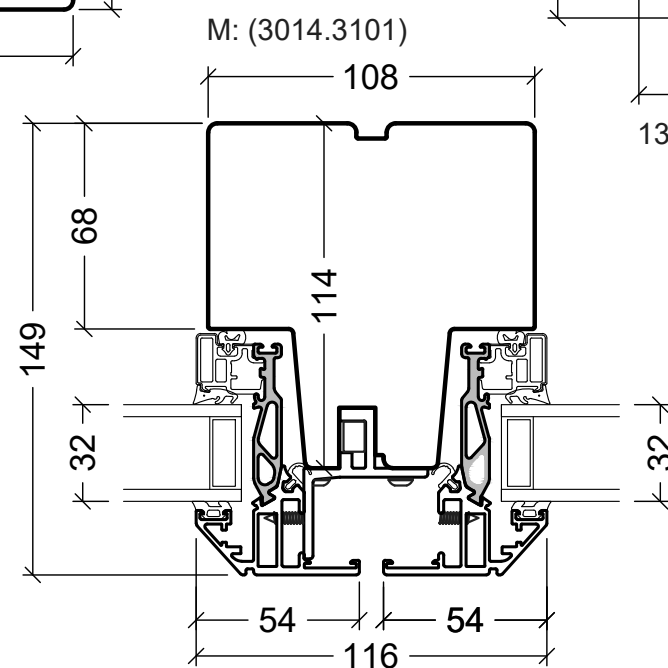
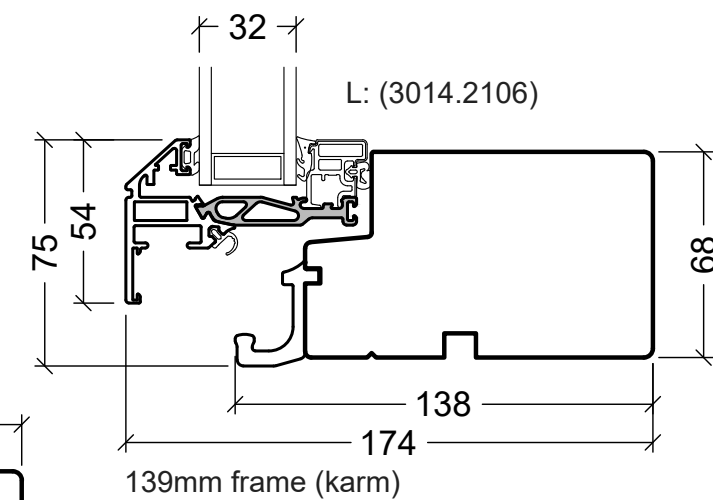
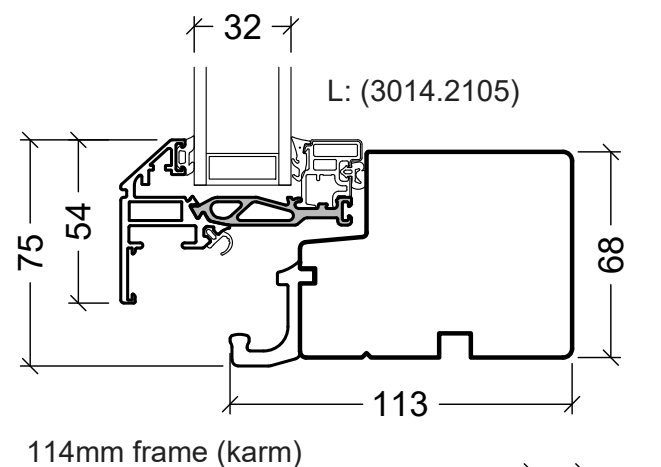
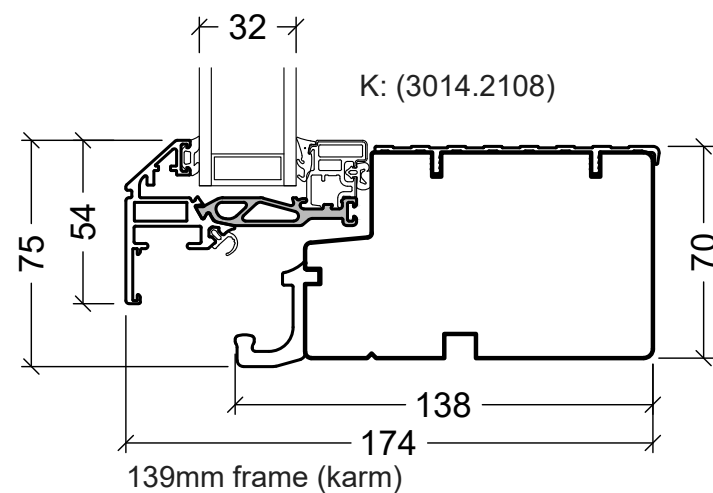
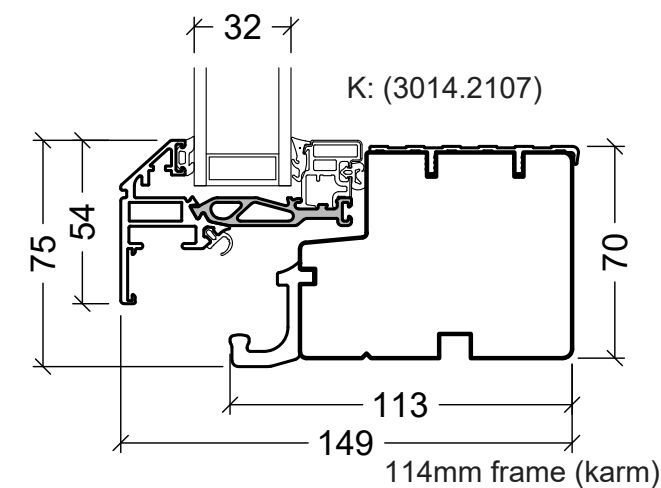
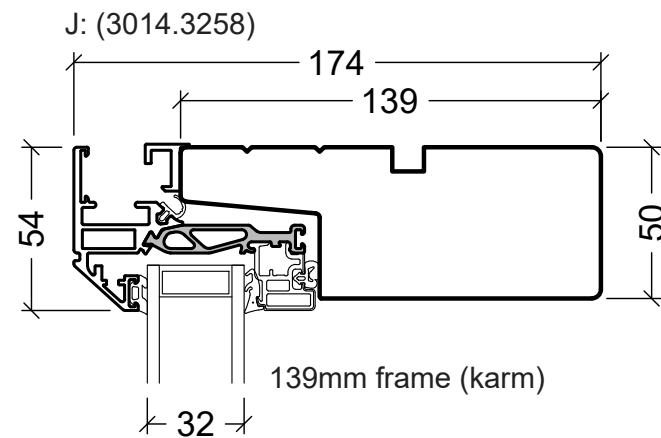
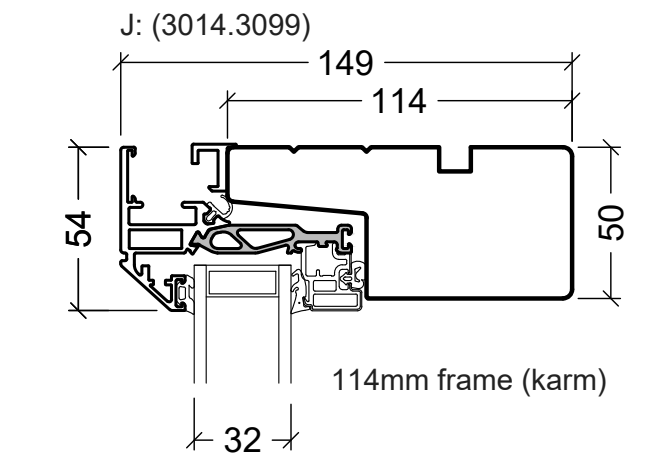
Dansk: Vendeindue

Scale: 1:2,5 / 1:40

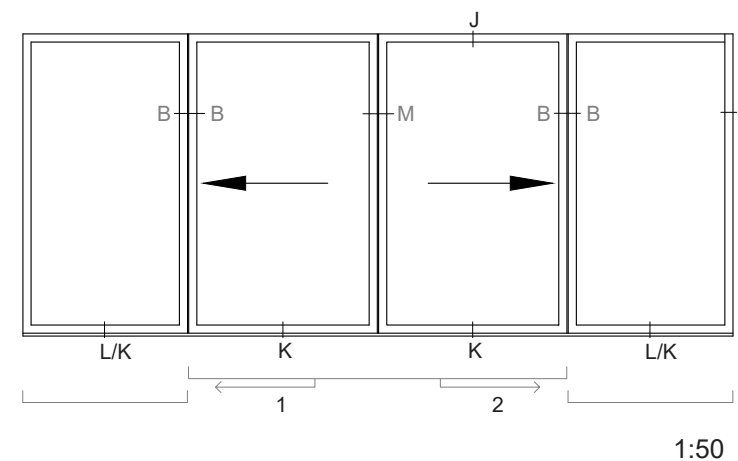
Edition No. 04

01.21 © 2015, 2021

© DOVISTA A/S, CVR-no. 21147583. All intellectual property rights, copyright as well as all rights in know-how vest in DOVISTA A/S. This drawing may not be reproduced, stored, or transmitted in any form by any means (electronic, mechanical, photocopying, recording or otherwise) without the prior written consent of DOVISTA A/S. This drawing is to be used only for the purposes specified by DOVISTA A/S and for no other purpose. We reserve all rights to change the product and product range without notice.



(B) (D) = as standard V200 ENERGY, see "Details"



VELFAC®

VELFAC is a trademark of DOVISTA A/S

System: VELFAC Edge

English: Sliding casement door

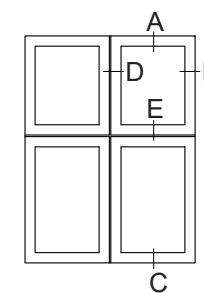
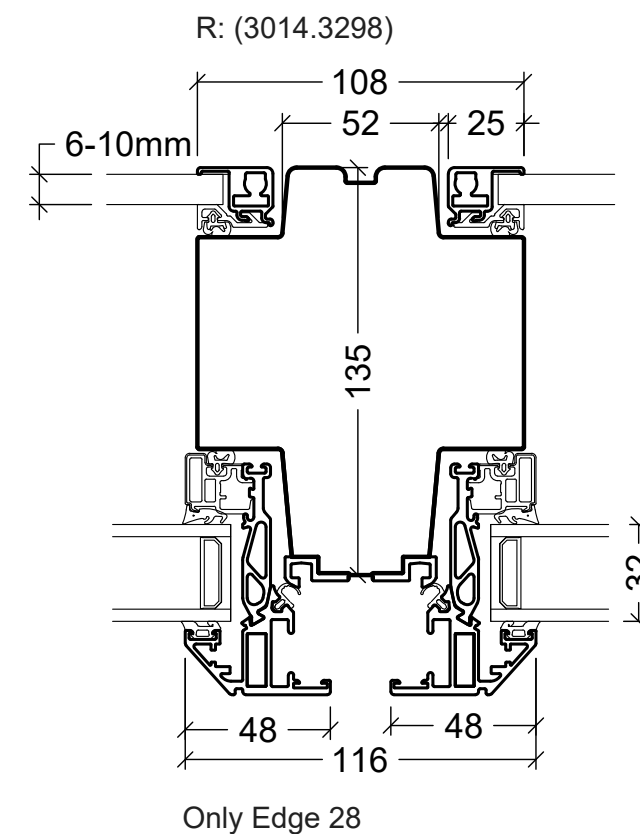
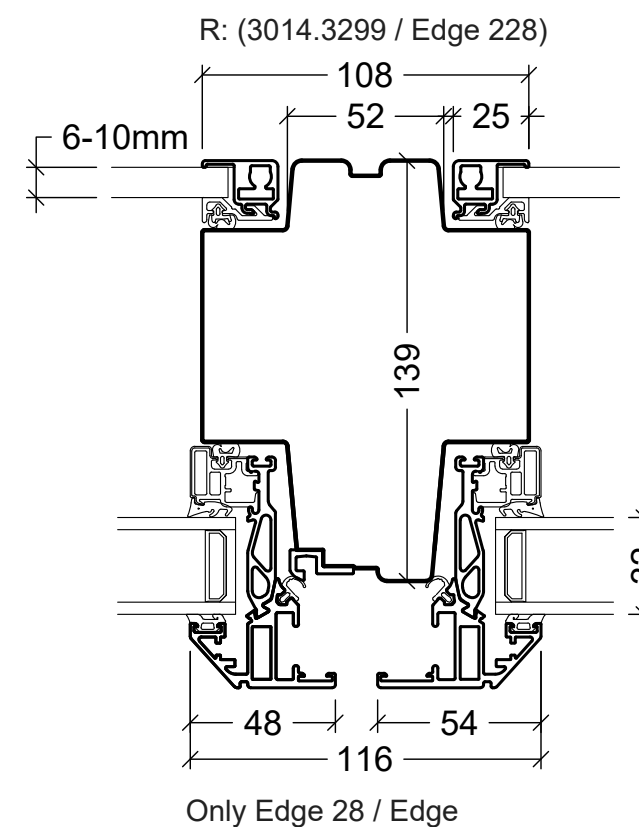
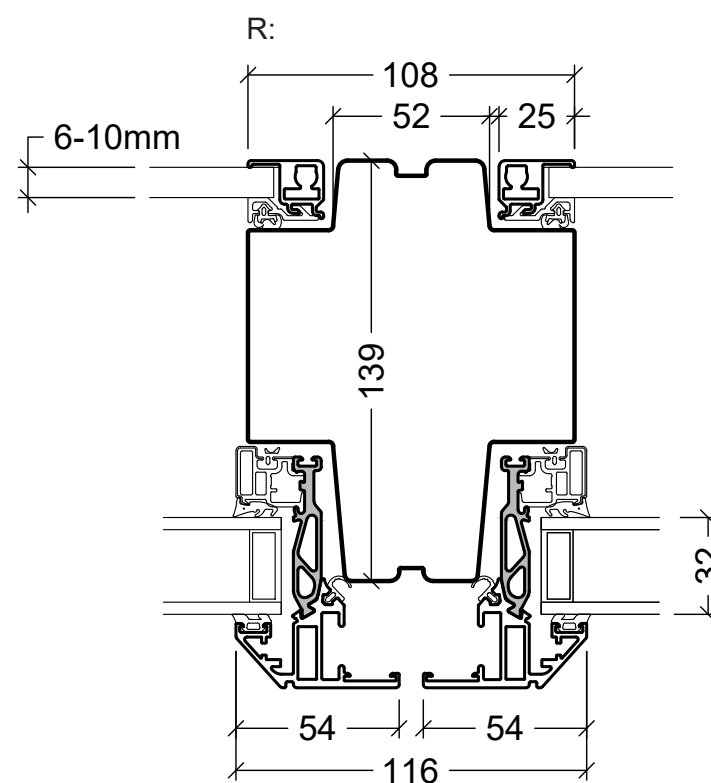
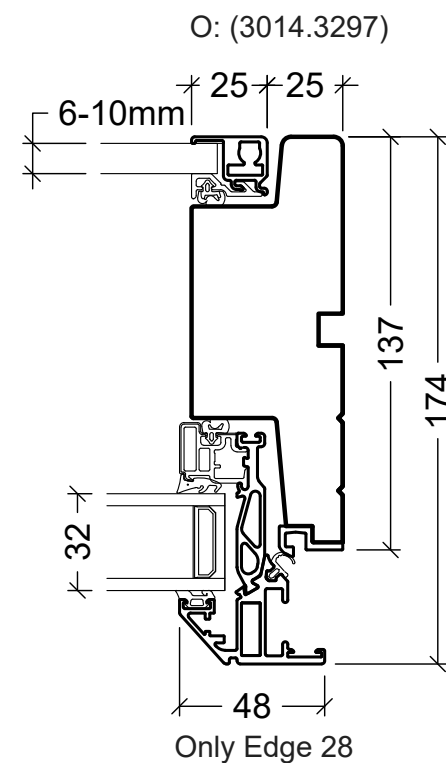
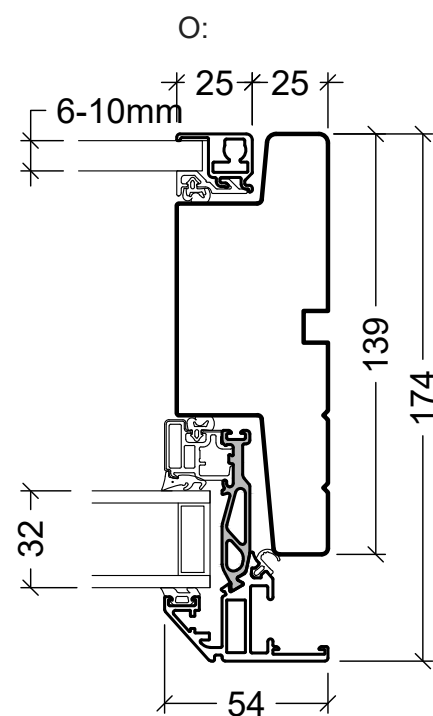
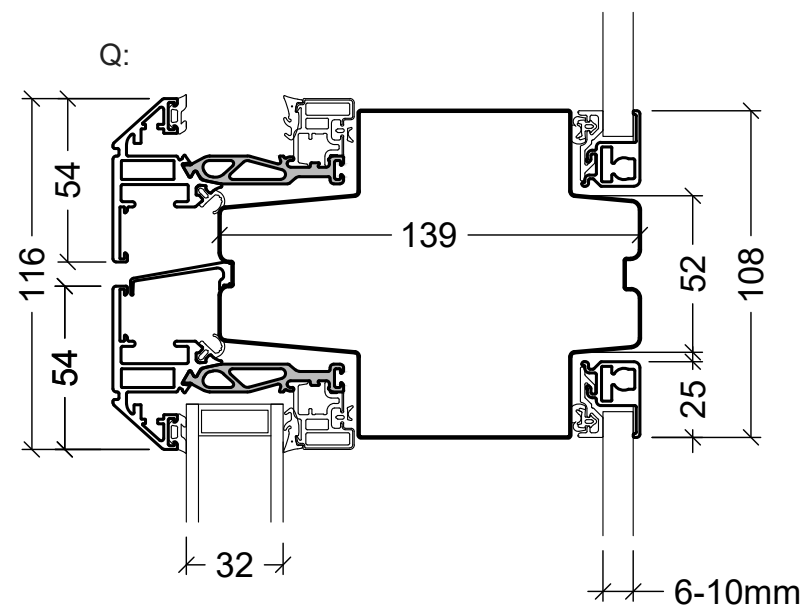
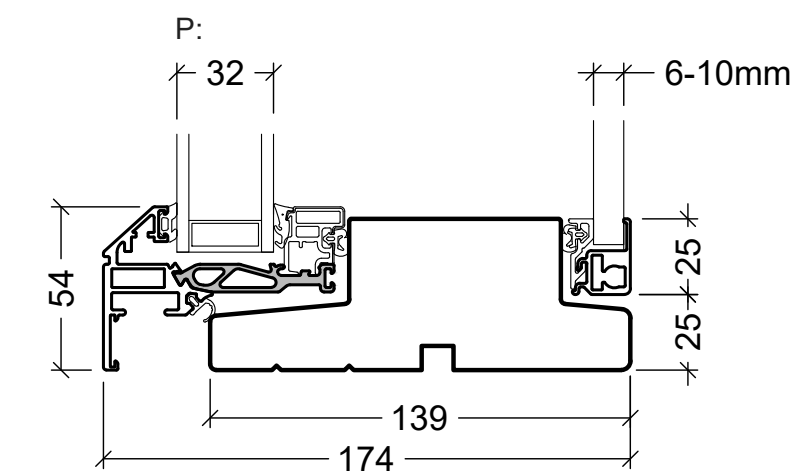
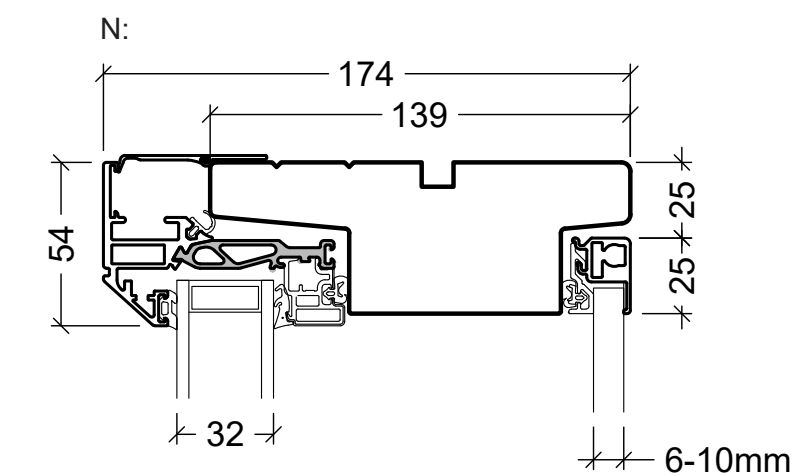
Dansk: Skydedør

Scale: 1:2,5 / 1:20 / 1:50

Edition No. 04

01.21 © 2015, 2021

© DOVISTA A/S, CVR-no. 21147583. All intellectual property rights, copyright as well as all rights in know-how vest in DOVISTA A/S. This drawing may not be reproduced, stored, or transmitted in any form by any means (electronic, mechanical, photocopying, recording or otherwise) without the prior written consent of DOVISTA A/S. This drawing is to be used only for the purposes specified by DOVISTA A/S and for no other purpose. We reserve all rights to change the product and product range without notice.



VELFAC®

VELFAC is a trademark of DOVISTA A/S

System: VELFAC Edge

English: Internal sash

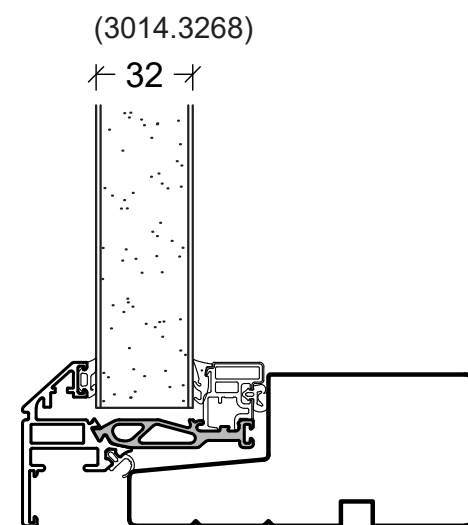
Dansk: Forsatsramme

Scale: 1:2,5 / 1:40

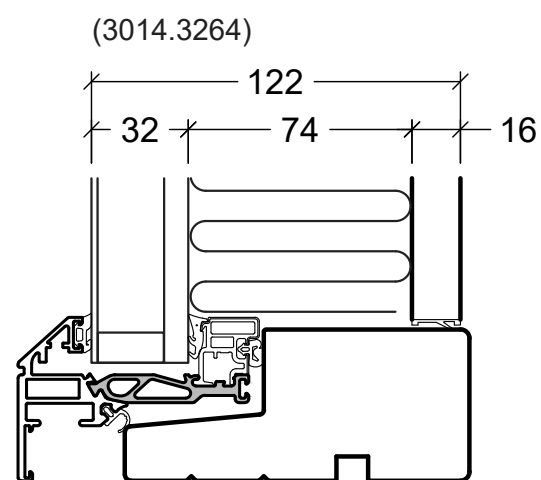
Edition No. 04

01.21 © 2015, 2021

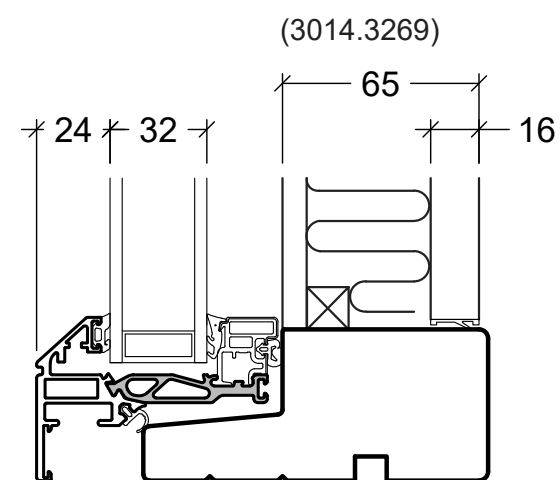
© DOVISTA A/S, CVR-no. 21147583. All intellectual property rights, copyright as well as all rights in know-how vest in DOVISTA A/S. This drawing may not be reproduced, stored, or transmitted in any form by any means (electronic, mechanical, photocopying, recording or otherwise) without the prior written consent of DOVISTA A/S. This drawing is to be used only for the purposes specified by DOVISTA A/S and for no other purpose. We reserve all rights to change the product and product range without notice.



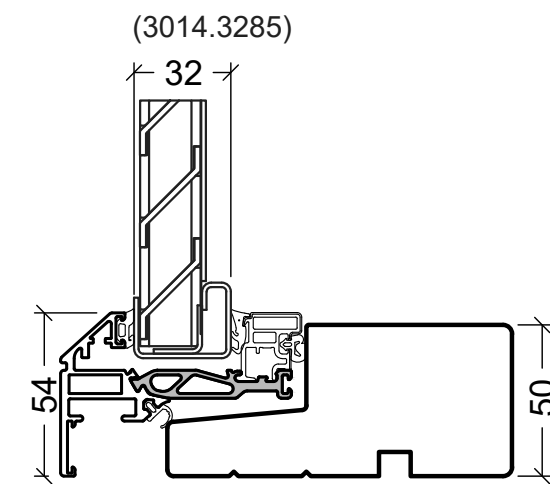
Sandwich panel



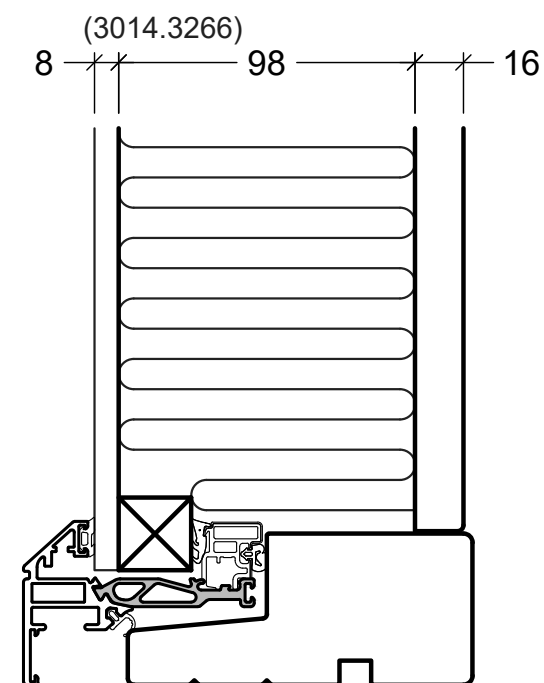
Ventilated panel



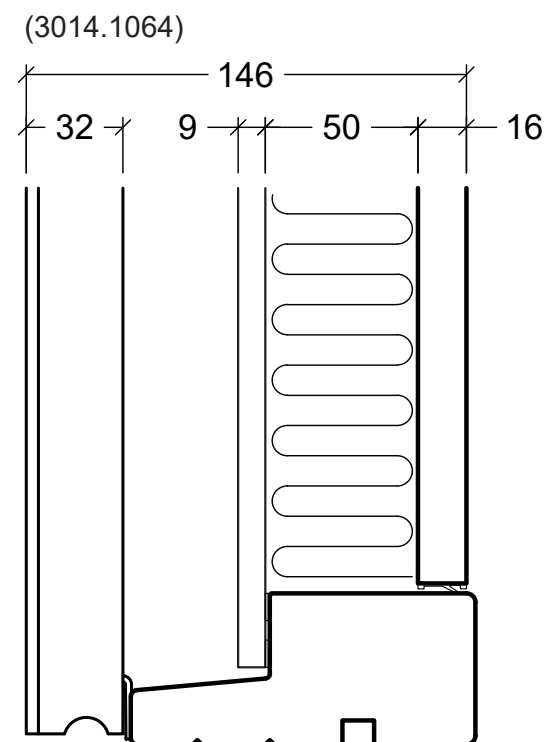
Shadowbox



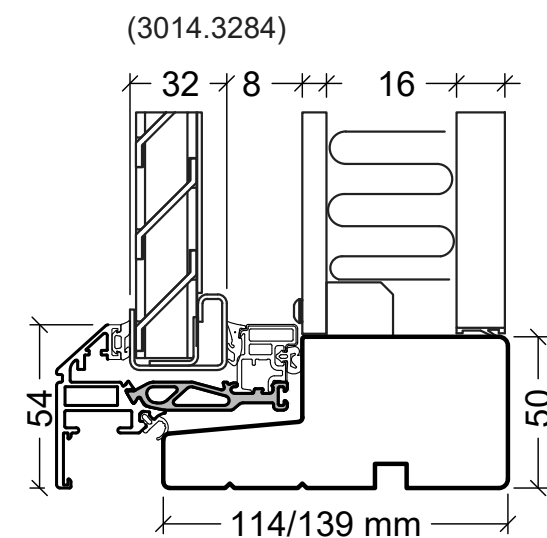
Louvre panel



Non ventilated panel



Rainscreen panel (VELFAC 280)



Louvre panel

VELFAC®

VELFAC is a trademark of DOVISTA A/S

System: VELFAC Edge

English: Panels

Dansk: Fyldninger

Scale: 1:2,5

Edition No. 04

01.21 © 2015, 2021

© DOVISTA A/S, CVR-no. 21147583. All intellectual property rights, copyright as well as all rights in know-how vest in DOVISTA A/S. This drawing may not be reproduced, stored, or transmitted in any form by any means (electronic, mechanical, photocopying, recording or otherwise) without the prior written consent of DOVISTA A/S. This drawing is to be used only for the purposes specified by DOVISTA A/S and for no other purpose. We reserve all rights to change the product and product range without notice.